

ANOTHER LAYER TO ENHANCE THE CONNECTION

THE SALADIN DIGITAL STORY

The Complete Package

Connect. Learn. Succeed.

CONNECT WITH DIGITAL PRODUCTS

To ensure that the student study experience blends well with the learning outcomes in this text, digital authors Steve Sullivan and Chris Gan prepared Connect® questions in multiple formats.

- **Animation** questions visualize a process to review and foster an understanding of a concept.
- **Interactive** questions are kinesthetic in nature and allow students to interact with the question by moving words or structures to complete the exercise.
- **Classification** questions are higher-order questions that ask students to apply what they have already learned in order to answer the question (using Bloom's levels 4 and 5).
- **Labeling** questions are drag-and-drop exercises that allow students to identify anatomical structures, and have a built-in zoom feature to help remove ambiguity on labeled diagrams.
- **Sequencing** questions help students critically understand how disease processes affect the human body by sequencing events in a physiological process.
- **Composition** questions ask students to fill in words to accurately complete a sentence (using Bloom's taxonomy level 1), and then ask students to rearrange sentences in a logical order to establish concepts (Bloom's levels 2 and 3).
- **Anatomy & Physiology | Revealed** images, built into varying question types, allow instructors to incorporate APR questions into Connect assignments.
- Several question types test students' ability to apply and analyze concepts (Bloom's levels 4 and 5).

Other question types, such as multiple choice, true/false, fill-in-the-blank, and "Before You Go On" essay, are included to ensure consistent and adequate depth and breadth of coverage for each Learning Outcome in the text. Many Connect

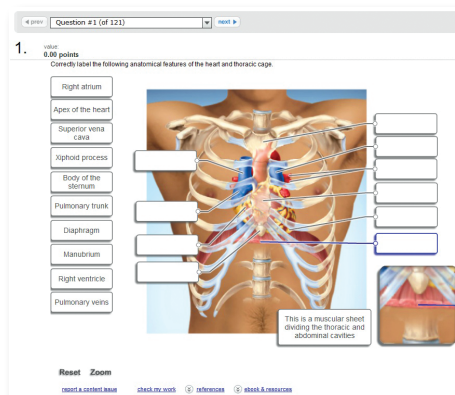
questions include a hint to help students recall information, make meaningful connections between concepts, and connect words and visual structures, promoting long-term memory. Explanations are included for numerous questions to provide feedback and guidance, which is especially useful to students taking an online or hybrid course.

Instructors are able to filter assignable questions by HAPS Learning Objectives to quickly find all corresponding questions.

ConnectPlus® Anatomy & Physiology

McGraw-Hill ConnectPlus interactive learning platform provides

- auto-graded assignments
- adaptive diagnostic tools
- powerful reporting against learning outcomes and level of difficulty
- an easy-to-use interface
- McGraw-Hill Tegrity® Campus, which digitally records and distributes your lectures with a click of a button
- Learning Objectives from the textbook that are tied to interactive questions in Connect, to ensure that all parts of the chapters have adequate coverage within Connect assignments. ConnectPlus includes the full textbook as an integrated, dynamic eBook, which you can also assign. Everything you need—in one place!



LearnSmart™ Advantage The Evolution of Learning

LearnSmart Advantage is a new series of adaptive learning products fueled by LearnSmart—the most widely used and adaptive learning resource proven to strengthen memory recall, increase retention, and boost grades. Each product in the series helps students study smarter and retain more knowledge. www.learnsmartadvantage.com

McGraw-Hill Smartbook™

This is the first—and only—adaptive reading experience designed to transform the way students read.

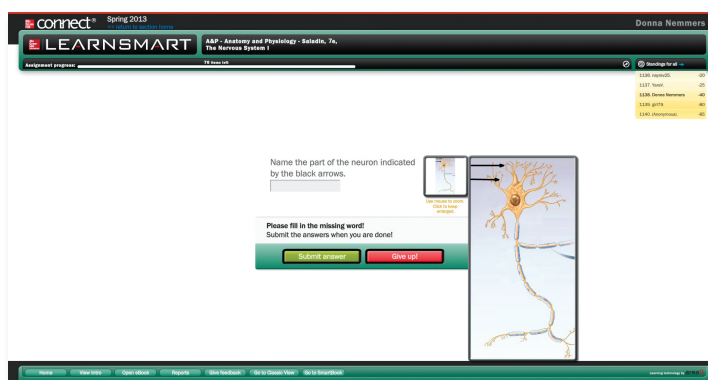
- Engages students with a personalized reading experience
- Ensures that students retain knowledge



McGraw-Hill LearnSmart®

Unlike static flashcards or rote memorization, LearnSmart ensures that your students have mastered course concepts before taking the exam, thereby saving you time and increasing student success.

- The only truly adaptive learning system
- Intelligently identifies course content students have not yet mastered
- Maps out personalized study plans for student success



McGraw-Hill LearnSmart Labs™

LEARNSMART

THE Virtual Lab Experience.

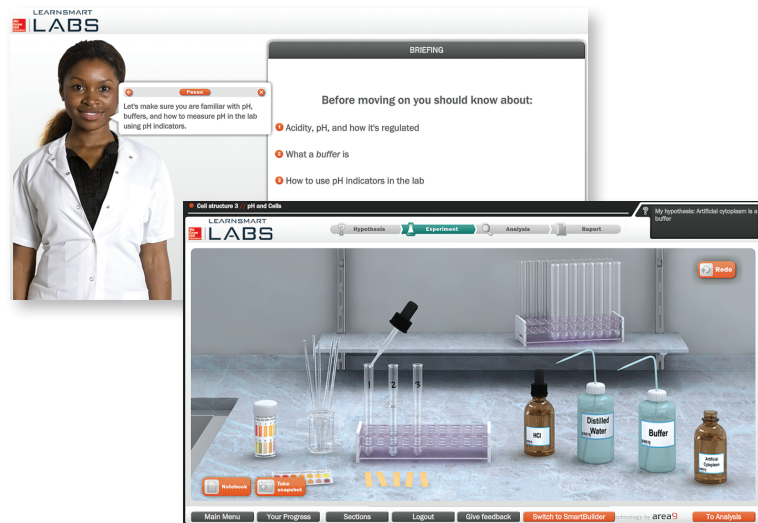


LABS™

Based on the same world-class super-adaptive technology as

LearnSmart, McGraw-Hill's LearnSmart Labs are must-see, outcomes-based lab simulations. LearnSmart Labs assess a student's knowledge and adaptively correct deficiencies, allowing the student to learn faster and retain more knowledge with greater success.

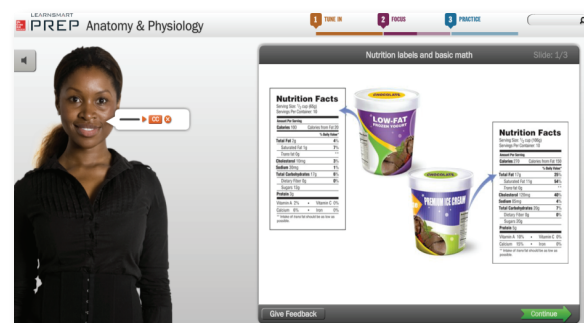
First, a student's knowledge is adaptively leveled on core learning outcomes: Questioning reveals knowledge deficiencies that are corrected by the delivery of content that is conditional on a student's response. Then, a simulated lab experience requires the student to think and act like a scientist: recording, interpreting, and analyzing data using simulated equipment found in labs and clinics. The student is allowed to make mistakes—a powerful part of the learning experience! A virtual coach provides subtle hints when needed, asks questions about the student's choices, and allows the student to reflect upon and correct those mistakes. Whether your need is to overcome the logistical challenges of a traditional lab, provide better lab prep, improve student performance, or make your online experience one that rivals the real world, LearnSmart Labs accomplish it all.



LearnSmart Prep™

This adaptive course preparation tool quickly and efficiently helps students prepare for college-level work.

- Levels out student knowledge
- Keeps students on track



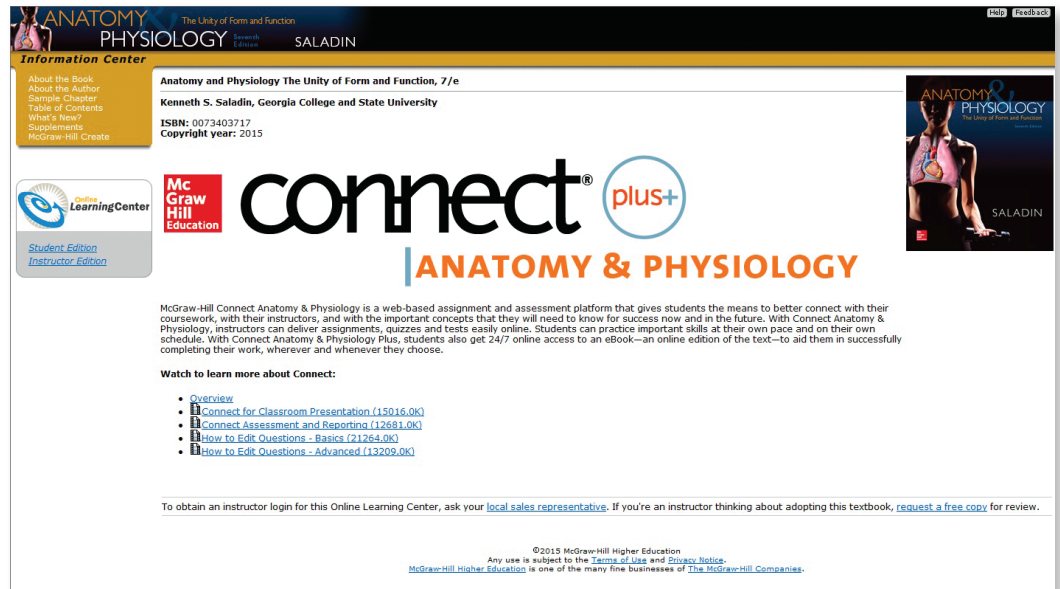
Textbook Website: www.mhhe.com/saladin7e

Accessed from the *Anatomy & Physiology* Connect website or through the URL shown above, Presentation Center is an online digital library containing photos, artwork, animations, and other media types that can be used to create customized lectures, visually enhanced tests and quizzes, compelling course websites, or attractive printed support materials. All assets are copyrighted by McGraw-Hill but can be used by instructors for classroom purposes. The visual resources in this collection include

- **Art** Full-color digital files (both labeled and unlabeled versions) of all illustrations in the book can be readily incorporated into lecture presentations, exams, or custom-made classroom materials. In addition, all files are pre-inserted into PowerPoint slides for ease of lecture preparation.
- **Photos** The photo collection contains digital files of photographs from the text, which can be reproduced for multiple classroom uses.
- **Tables** Every table that appears in the text has been saved in electronic form for use in classroom presentations and/or quizzes.
- **Animations** Numerous full-color animations illustrating important processes are also provided. Harness the visual impact of concepts in motion by importing these files into classroom presentations or online course materials.

Also accessed through the *Anatomy & Physiology* Connect website are

- **PowerPoint Lecture Outlines** Ready-made presentations that combine art and lecture notes, as well as relevant *Anatomy & Physiology* | REVEALED images, are provided for each chapter of the text.
- **PowerPoint Slides** For instructors who prefer to create their lectures from scratch, all illustrations, photos, tables, and animations are pre-inserted by chapter into blank PowerPoint slides.
- **Digital Lecture Capture: Tegrity®** McGraw-Hill Tegrity Campus records and distributes your lecture with just a click of a button. Students can view anytime/anywhere via computer, iPod, or mobile device. Tegrity indexes as it records your slideshow presentations and anything shown on your computer, so students can use keywords to find exactly what they want to study.
- **Computerized Test Bank** Test questions are served up utilizing EZ Test software to accompany *Anatomy & Physiology*. These questions are also available to instructors in Word format.



Instructors: To access Connect, request registration information from your McGraw-Hill sales representative.

Content Delivery Flexibility

Anatomy & Physiology is available in many formats in addition to the traditional textbook to give instructors and students more choices. Choices include

- **Customizable Textbooks: Create™** Introducing McGraw-Hill Create, a self-service website that allows you to create custom course materials—print and eBooks—by drawing upon McGraw-Hill’s comprehensive, cross-disciplinary content. Add your own content quickly and easily. Tap into other rights-secured, third-party sources as well. Then, arrange the content in a way that makes the most sense for your course. Even personalize your book with your course name and information. Choose the best format for your course: color print, black and white print, or eBook. The eBook is now viewable on an iPad! When you are finished customizing, you will receive a free PDF review copy in just minutes. Visit McGraw-Hill Create—www.mcgrawhillcreate.com—today and begin building your perfect book.
- **ConnectPlus eBook** McGraw-Hill’s ConnectPlus eBook takes digital texts beyond a simple PDF. With the same content as the printed book, but optimized for the screen, ConnectPlus has embedded media, including animations and videos, which bring concepts to life and provide “just-in-time” learning for students. Additionally, fully integrated homework allows students to interact with the questions in the text to determine if they’re gaining mastery of the content, and can also be assigned by the instructor.

An Interactive Cadaver Dissection Experience

Anatomy & Physiology | REVEALED
www.aprevealed.com

APR 3.0 is an interactive cadaver dissection tool to enhance lectures and labs that students can use anytime, anywhere. Instructors may customize APR 3.0 to their course by selecting the specific structures they require in their course, and APR 3.0 does the rest. Once the structure list is generated, APR highlights these selected structures for students. APR contains all the material covered in an A&P course, including these three new modules:

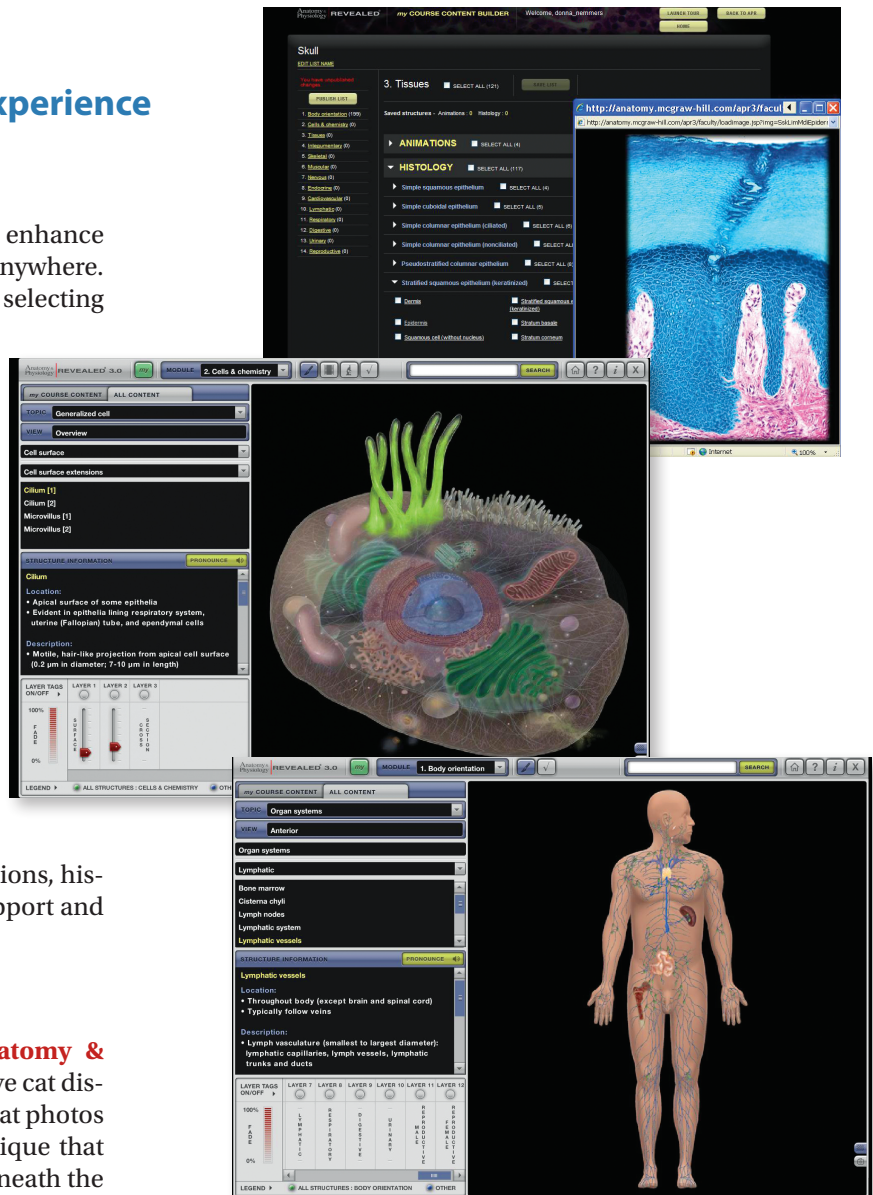
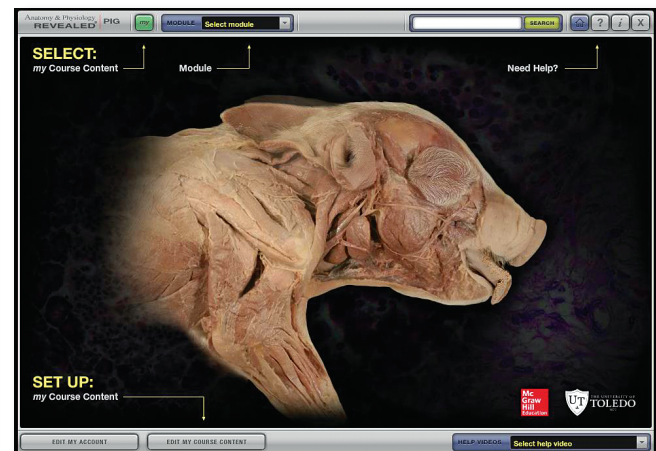
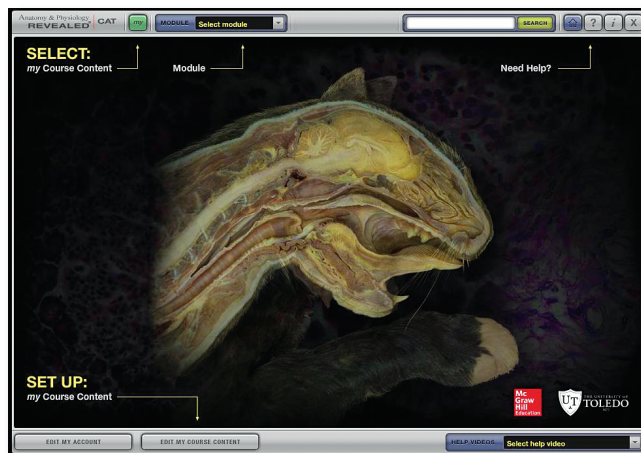
- Tissues
- Cells and Chemistry
- Body Orientation

An APR application also makes APR accessible on Apple® and Android™ tablets.

Anatomy & Physiology's text, artwork, and photos are integrated with APR 3.0, so that wherever students see the APR 3.0 logo **AP|R** in their eBook, they can simply click the logo and they will be taken specifically to the dissection photos, animations, histology slides, and radiological images in APR that support and enrich their understanding of the text.

APR Is Now Available in Two New Versions

Anatomy & Physiology Revealed | Cat® and **Anatomy & Physiology Revealed | Fetal Pig®** are online interactive cat dissection and fetal pig dissection experiences that use cat photos or fetal pig photos, combined with a layering technique that allows you to peel away layers to reveal structures beneath the surface. Both **Anatomy & Physiology Revealed | Cat** and **Anatomy & Physiology Revealed | Fetal Pig** offer animations, histologic and radiologic imaging, audio pronunciations, and comprehensive quizzing.





McGraw-Hill Higher Education and Blackboard® Have Teamed Up.

Do More

Blackboard, the Web-based course-management system, has partnered with McGraw-Hill to better allow students and faculty to use online materials and activities to complement face-to-face teaching. Blackboard features exciting social learning and teaching tools that foster more logical, visually impactful, and active learning opportunities for students. You'll transform your closed-door classrooms into communities where students remain connected to their educational experience 24 hours a day.

This partnership allows you and your students access to McGraw-Hill's Connect and Create right from within your Blackboard course—all with one single sign-on. Blackboard fosters deep integration of McGraw-Hill content and content engines within Blackboard. Whether you're choosing a book for your course or building Connect assignments, all the tools you need are right where you want them—inside of Blackboard.

Gradebooks are now seamless. When a student completes an integrated Connect assignment, the grade for that assignment automatically (and instantly) feeds your Blackboard grade center. Ask your local McGraw-Hill representative for details.

Even if your school is not using Blackboard, we have a solution for you. Learn more at www.domorenow.com.

LAB MANUAL OPTIONS TO FIT YOUR COURSE

The *Anatomy & Physiology Laboratory Manual* by Eric Wise of Santa Barbara City College is expressly written to coincide with chapters of Saladin's *Anatomy & Physiology*.

The *Laboratory Manual for Human Anatomy & Physiology* by Terry Martin of Kishwaukee College is written to coincide with Saladin or any A&P textbook.

- Three versions available including the main version, cat, and fetal pig
- Includes Ph.I.L.S. 4.0
- Outcomes and assessments format
- Clear, concise writing style

The *Clinical Applications Manual to Accompany Anatomy and Physiology* is correlated to the Saladin text. The first six chapters introduce general aspects of patient examination, diagnosis, and treatment, as well as pathologies at the cell, tissue, and genetic levels. All later chapters explain disorders and procedures specific to each body system, elaborating on some clinical conditions described in the text, and introducing additional conditions that are especially common or interesting.

Solve Saladin Crossword Puzzle Supplement by Greg Reeder of Broward Community College contains crossword puzzles tailored to each section of Saladin's chapters, including a "Quiz" puzzle to summarize the most important concepts in each chapter. This excellent anatomy and physiology study aid contains all puzzle answers in the back of the book.

OTHER RESOURCES AVAILABLE

Student Study Guide

This comprehensive study guide written by experienced instructor Jacque Homan in collaboration with Ken Saladin contains vocabulary-building and content-testing exercises, labeling exercises, and practice exams.

Physiology Tutorials

MediaPhys offers detailed explanations, high-quality illustrations, and animations to provide students with a thorough introduction to the world of physiology—giving them a virtual tour of physiological processes.

Physiology Interactive Lab Simulations

Ph.I.L.S. offers 42 lab simulations that may be used to supplement or substitute for wet labs. Users may adjust variables, view outcomes, make predictions, draw conclusions, and print lab reports.



McGraw-Hill offers various tools and technology products to support the textbook. Instructors can obtain teaching aids to accompany this textbook by visiting our online catalog at www.mhhe.com, by calling McGraw-Hill Customer Service at 1-800-338-3987, or by contacting their local McGraw-Hill sales representative. Students can order supplemental study materials by contacting their campus bookstore or online at www.shopmcgraw-hill.com.